

**PROGRESS REPORT OF STUDENTS
DEPARTMENT OF PHARMACOLOGY**

1. Introduction

The remedial examination was conducted to provide students with an opportunity to improve their performance following PCT II. This report analyses the progress of students who achieved higher marks in the remedial examination compared to their PCT II results.

2. Objectives

- To evaluate student performance in the remedial examination.
- To identify the number of students who showed improvement.
- To assess the effectiveness of remedial support measures.

3. Observations

- A significant proportion of students scored higher in the remedial examination than in PCT II.
- The improvement suggests effective utilization of remedial sessions and individual preparation.
- Many students demonstrated better conceptual understanding and examination skills.

4. Analysis

- Improvement in marks indicates the success of targeted academic support.
- The upward trend reflects increased student engagement and learning motivation.
- Students benefitted from feedback and corrective strategies provided after PCT II.



5. Conclusion

The analysis shows that remedial examinations have contributed positively to student progress. The improved performance highlights the importance of remedial interventions in academic development.

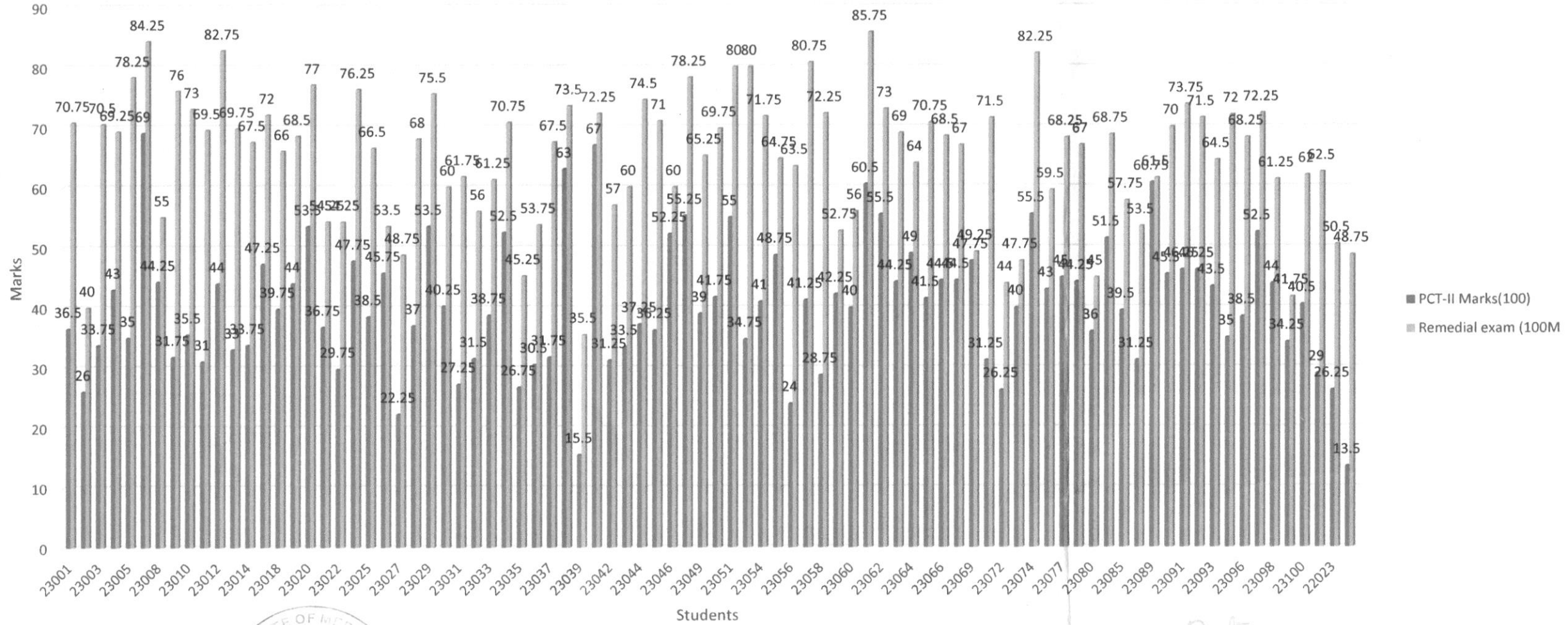
Report Prepared by : Mrs. Liji K O., Department Secretary, Department of Pharmacology, AIMS, Thrissur

Verified by : Dr. V K Prathibha., Professor and Head, Department of Pharmacology, AIMS, Thrissur



Prathibha
Dr. V.K. PRATHIBHA, MBBS, MD
Professor & Head
Department of Pharmacology
Amala Institute of Medical Sciences
Thrissur, Kerala-680 555
Reg. No: 41507

Graphical Representation of Student Progression in the Department of Pharmacology



Betsy
Dr. BETSY THOMAS
 MD, FRCOG, DNB, MICOG
 PRINCIPAL
 AMALA INSTITUTE OF MEDICAL SCIENCES
 AMALA NAGAR, THRISSUR-680 555