

CANTEEN FACILITY - REPORT

Standard: 1.2.7

Measurable point: Canteen facility



Thrissur, Kerala, India

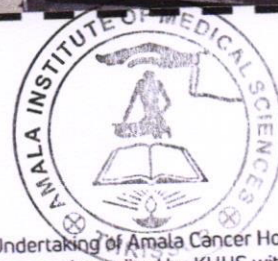
H569+w5v, Amalanagar, Thrissur, Kerala 680555, India

Lat 10.562297° Long 76.167803°





30/05/2025 03:40 PM GMT +05:30

Amala OP - Canteen Amala hospital

OP CANTEEN



Page 1 of 19

Amala Institute of Medical Sciences (An Undertaking of Amala Cancer Hospital Society)
Affiliated to Kerala University of Health Sciences Accredited by KUHS with QAS A+ Grade &
NABH & NABL Accredited & ISO 9001:2015 Certified, Amala Nagar P.O, Thrissur, Kerala.
Ph: +91 487 2304000, 2304070 | Fax: +91 487 2307969 | urooncology@amalaims.org
www.amalaims.org | Follow us on    





CANTEEN FACILITY - REPORT

Standard: 1.2.7

Measurable point: Canteen facility



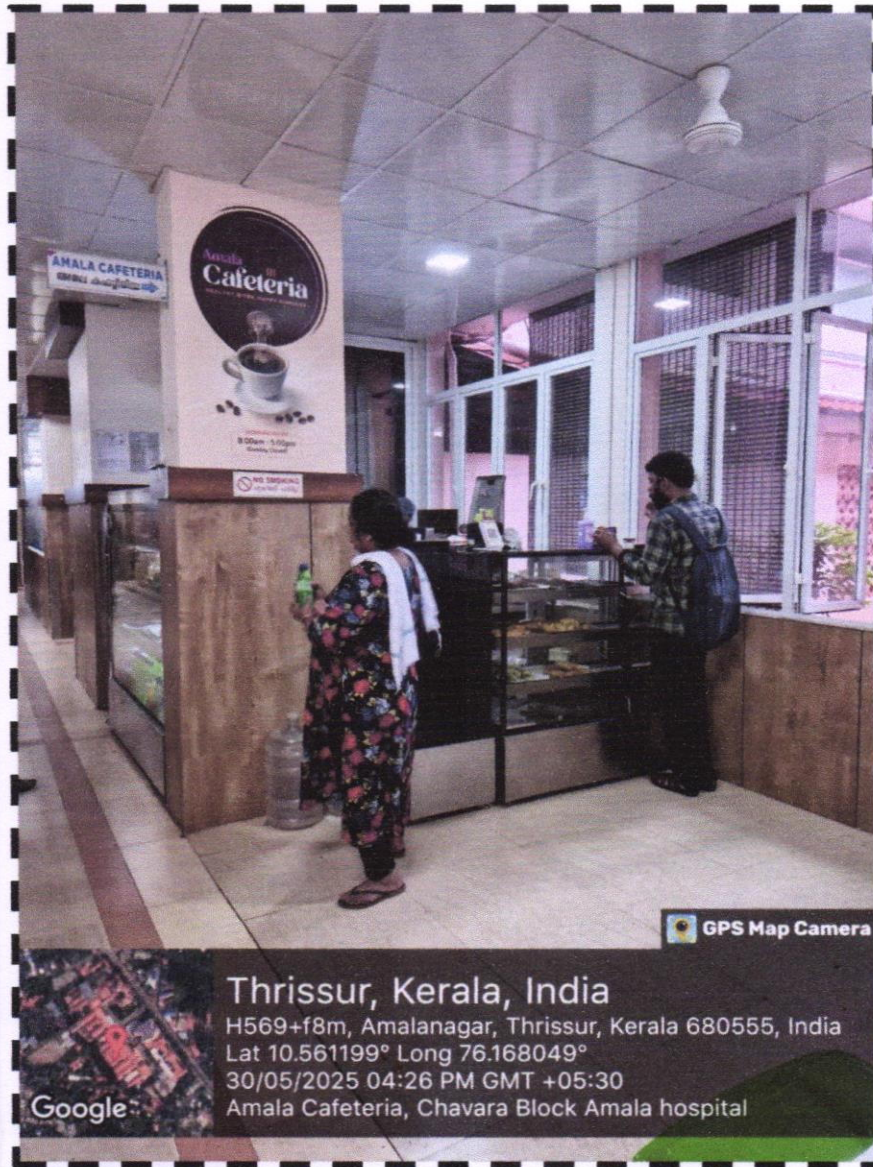
AMALA CAFÉ – NEAR AMALA SQUARE



CANTEEN FACILITY - REPORT

Standard: 1.2.7

Measurable point: Canteen facility



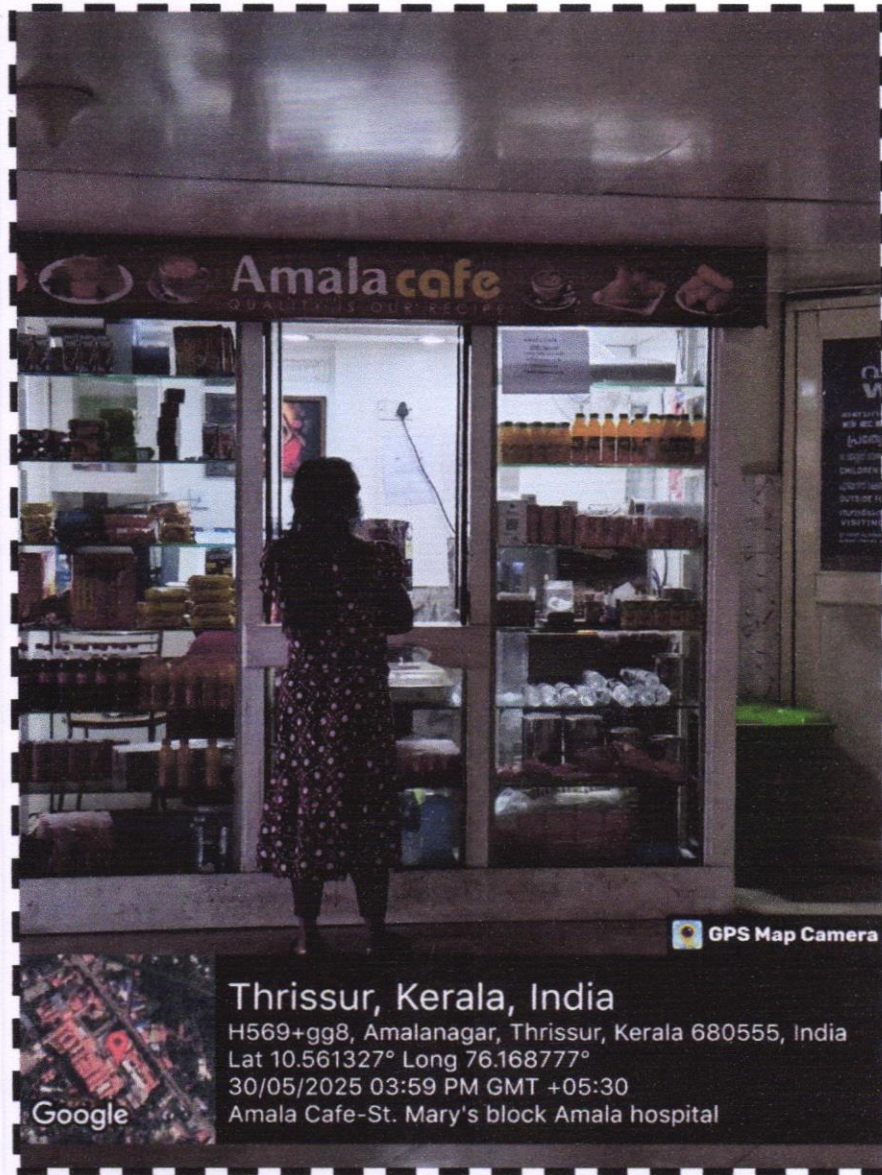
AMALA CAFÉ – CHAVARA BLOCK



CANTEEN FACILITY - REPORT

Standard: 1.2.7

Measurable point: Canteen facility



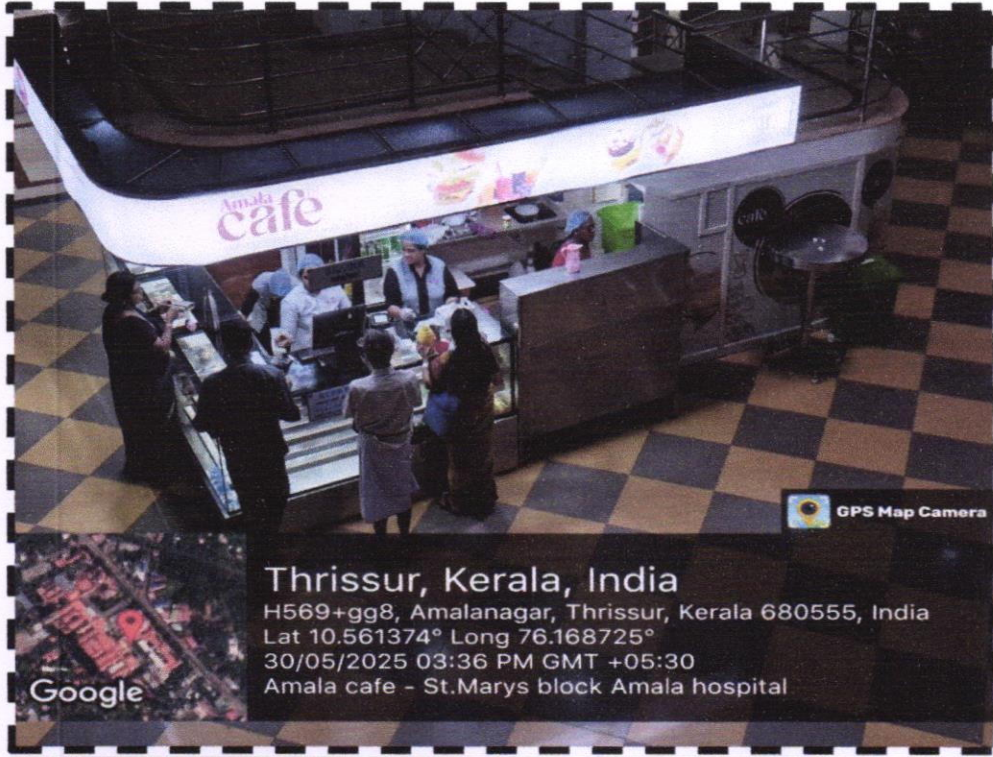
AMALA CAFÉ – NEAR ICU COMPLEX



CANTEEN FACILITY - REPORT

Standard: 1.2.7

Measurable point: Canteen facility



AMALA CAFÉ – ST. MARY’S BLOCK





CANTEEN FACILITY - REPORT

Standard: 1.2.7

Measurable point: Canteen facility



OP CANTEEN





CANTEEN FACILITY - REPORT

Standard: 1.2.7

Measurable point: Canteen facility



CANTEEN RATE - CONCESSION

