

AIMS/QCD/057/25

13/05/2025

NOTICE

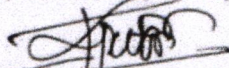
Dear Team,

As per the decision of the Safety & Disaster Management Committee Maintenance and Development Committee, the Fire Assembly Points for the different blocks have been revised as follows.

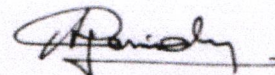
Fire Assembly Point Number	Fire Assembly Points	Areas
01	Near Labour Room	Chavara counter to Labour room Death & Birth Department to Ward 1 Paediatric OPD to NICU Ward 12 to Ward 9 GICU to Dietetics and Nutrition Dept.
02	In front of OP Canteen	Sacred Heart Block OP Canteen, Amala Café
03	Near Check post (St. Mary's - Chavara Connection Passage)	St Mary's Block (Excluding St Mary's Basement)
04	Near Nuclear Medicine	Surgery OPD to Pharmacy office Ward 4 to Ward 5 Director's Office to Dental OPD Ward 14 to Ward 15 Ward 22 to Ward 24 Nuclear Medicine & PET
05	Near Mortuary	Microbiology to Geriatrics OPD Ward 6 to Ward 8 Blood Center to Ward 18 Ward 16 to Pulmo OPD Purchase, Inventory, Printing Unit, Media & PR, AMS, MRD, Biomedical Department
06	In front of Medical College	St. Mary's Block Basement PMR, Physiotherapy CDC, Medical College

We request you to kindly adhere to the above policy henceforth.

Copy to MS, CNO, All HODs (related) All In charges



Fr. Deljo Puthoor CMI
Accreditation Coordinator & Joint Director



Fr. Antony Perinchery CMI
Joint Director



Amala Institute of Medical Sciences (An Undertaking of Amala Cancer Hospital Society)
Affiliated to Kerala University of Health Sciences; Accredited by KUHS with QAS A+ Grade &
NABH Accredited & ISO 9001:2015 Certified, Amala Nagar P.O, Thrissur, Kerala.
Ph: 0487 2304000 | www.amalaims.org | Follow us on



Betsy
Dr. BETSY THOMAS
MD, FRCOG, DNB, MICOG
PRINCIPAL
AMALA INSTITUTE OF MEDICAL SCIENCES
AMALA NAGAR, THRISSUR-680 555



FIRE ASSEMBLY POINTS REPORT

Standard: 1.1.9

Measurable Indicator: Hospital Safety Management

Total no of assembly points: 5



FIRE ASSEMBLY POINT AT SH BLOCK



Betsy

Dr. BETSY THOMAS
MD, FRCOG, DNB, MICOG

PRINCIPAL

Amala Institute of Medical Sciences (An Undertaking of Amala Cancer Hospital Society)
 Affiliated to Kerala University of Health Sciences Accredited by KUHS with QAS A+ Grade
 NABH & NABL Accredited & ISO 9001:2015 Certified, Amala Nagar P.O, Thrissur, Kerala 680 555
 Ph: +91 487 2304000, 2304070 | Fax: +91 487 2307969 | urooncology@amalaims.org
 www.amalaims.org | Follow us on





Google

Thrissur, Kerala, India
 H569+q2j, Amalanagar, Thrissur, Kerala 680555, India
 Lat 10.561992° Long 76.167432°
 19/07/2025 03:15 PM GMT +05:30
 Fire assembly point Amala hospital, Thrissur

FIRE ASSEMBLY POINT AT CHAVARA BLOCK



Amala Institute of Medical Sciences (An Undertaking of Amala Cancer Hospital Society)
 Affiliated to Kerala University of Health Sciences Accredited by KUHS with QAS A+ Grade &
 NABH & NABL Accredited & ISO 9001:2015 Certified, Amala Nagar P.O, Thrissur, Kerala.
 Ph: +91 487 2304000, 2304070 | Fax: +91 487 2307969 | urooncology@amalaims.org
 www.amalaims.org | Follow us on



FIRE ASSEMBLY POINT AT ST. MARY'S BLOCK





Amala
INSTITUTE OF MEDICAL SCIENCES

NABH & NABL ACCREDITED ISO 9001:2015

REDEFINING
CARE
everyday
in every way



FIRE ASSEMBLY POINT AT NUCLEAR MEDICINE BUILDING



Verified By

Betsy

Dr. Betsy Thomas

Dr. BETSY THOMAS

MD, FRCOG, DNB, MICOG



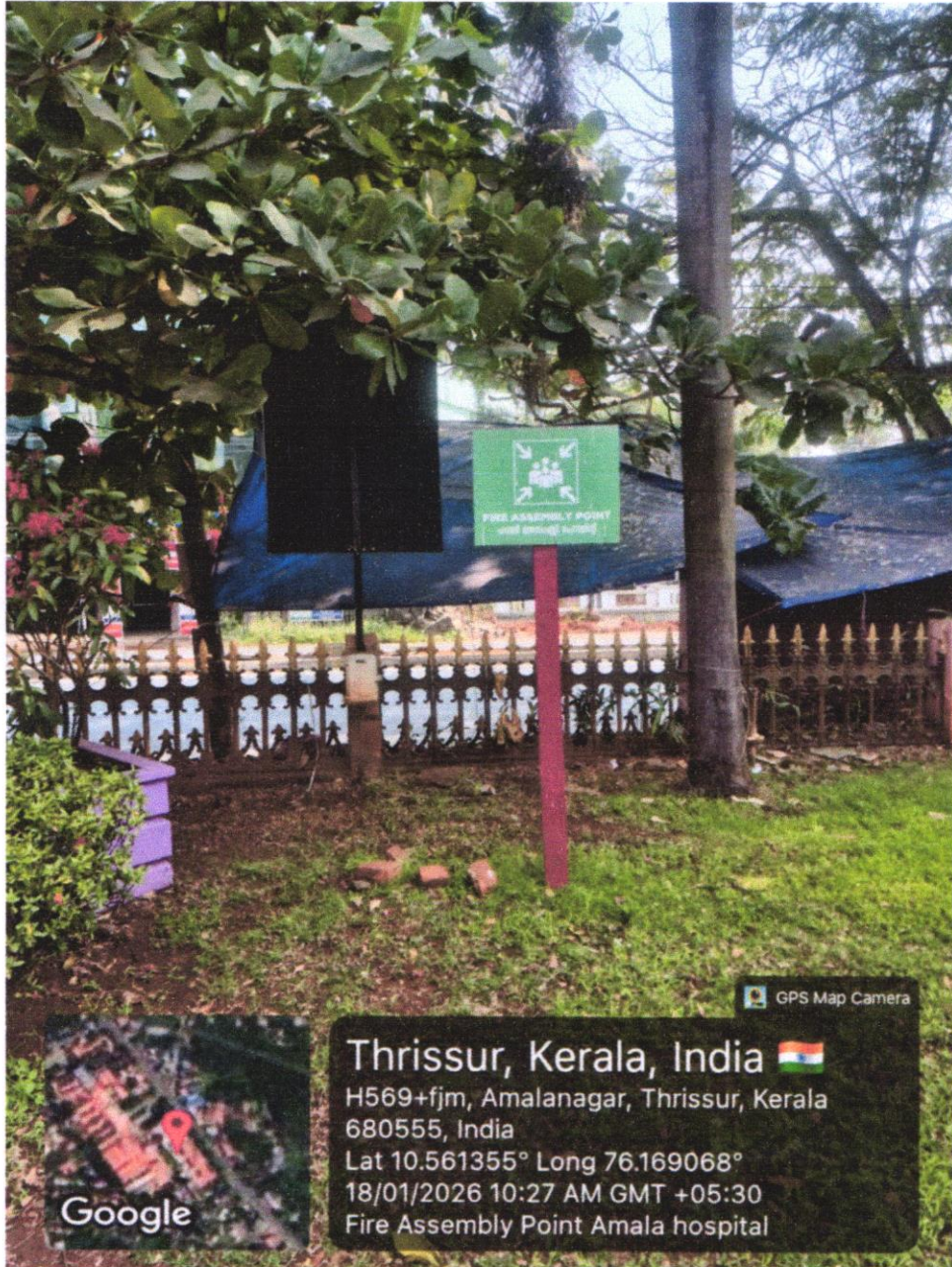
Amala Institute of Medical Sciences (An Undertaking of Amala Cancer Hospital (Private))

Affiliated to Kerala University of Health Sciences Accredited by KUNHS with OAS A+ Grade &

NABH & NABL Accredited & ISO 9001:2015 Certified, Amala Nagar P.O. Thrissur, Kerala

Ph: +91 487 2304000, 2304070 | Fax: +91 487 2307969 | urooncology@amalains.org

www.amalains.org | Follow us on



Betsy
Dr. BETSY THOMAS
MD, FRCOG, DNB, MICOG
PRINCIPAL
AMALA INSTITUTE OF MEDICAL SCIENCES
AMALA NAGAR, THRISSUR-680 555





1
FIRE ASSEMBLY POINT
ചരമ അനുഭവിക്കുന്ന സമയത്ത്

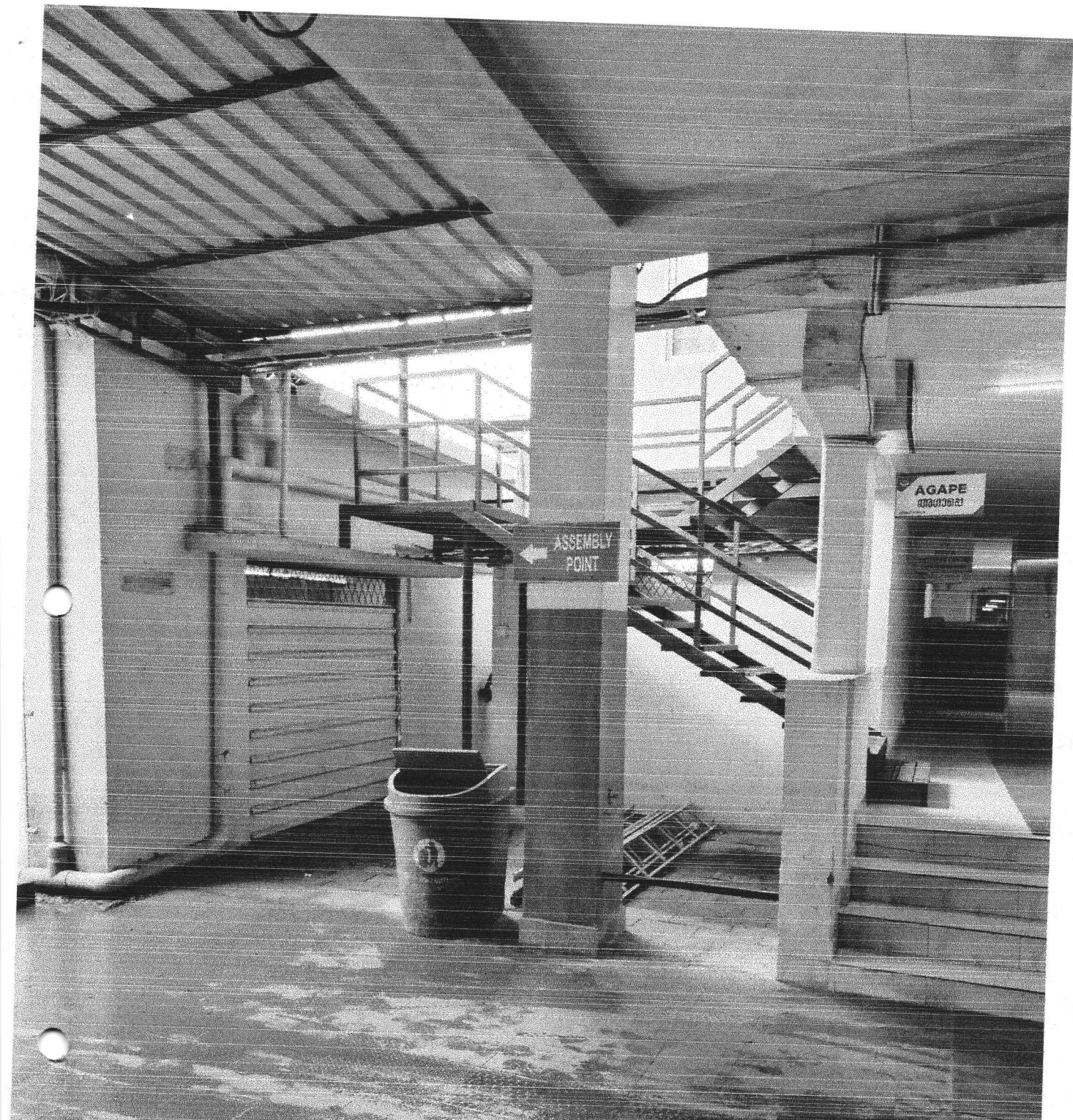
GPS Map Camera

Thrissur, Kerala, India
H569+q2j, Amalanagar, Thrissur, Kerala 680555, India
Lat 10.561992° Long 76.167432°
19/07/2025 03:15 PM GMT +05:30
Fire assembly point Amala hospital, Thrissur



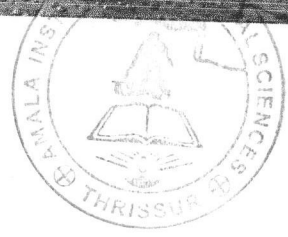
Google





 GPS Map Camera

Thrissur, Kerala, India
H569+v6f, Amalanagar, Thrissur, Kerala 680555, India
Lat 10.562275° Long 76.167982°
21/07/2025 02:28 PM GMT +05:30
Fire Exit 1 chavara block Amala hospital



EVENING
OP
CONSULTING HOURS
5.30 pm to 7.00 pm
→

FIRE ASSEMBLY POINT
2

GPS Map Camera

Thrissur, Kerala, India

H569+q6f Amala Garden Park, Amala Hospital Rd,
Amalanagar, Thrissur, Kerala 680555, India

Lat 10.562034° Long 76.167836°

21/07/2025 02:29 PM GMT +05:30

Fire Assembly Point SH block Amala hospital

Google





GPS Map Camera

Thrissur, Kerala, India

H569+f8m, Amalanagar, Thrissur, Kerala 680555, India

Lat 10.561049° Long 76.168619°

21/07/2025 02:07 PM GMT +05:30

Fire Assembly Point St. marys block

Google





GPS Map Camera

Thrissur, Kerala, India

H569+cp3, Amalanagar, Thrissur, Kerala 680555, India

Lat 10.560787° Long 76.169183°

30/05/2025 04:43 PM GMT +05:30

Fire Assembly Point Amala hospital

Google





GPS Map Camera

Thrissur, Kerala, India
H569+4fw, Amalanagar, Thrissur, Kerala 680555, India
Lat 10.560334° Long 76.168909°
21/07/2025 02:13 PM GMT +05:30
Fire Assembly Point Amala hospital thrissur



Google



Betsy
DR. BETSY THOMAS
MD, FRCOG, DNB, MICOG
PRINCIPAL
AMALA INSTITUTE OF MEDICAL SCIENCES
AMALA NAGAR, THRISSUR-680 555