

Amala Integrated Medical Research Department

The Amala Institute of Medical Sciences (AIMS) in Thrissur, Kerala, renowned for its commitment to healthcare innovation and excellence, has launched a groundbreaking initiative: the Amala Integrated Medical Research Department (AIMRD). This new department epitomizes AIMS' dedication to bridging the gap between basic scientific research and clinical applications, aiming to translate scientific discoveries into tangible health benefits through an integrated, multidisciplinary approach. AIMRD is envisioned as a central hub for cutting-edge research, fostering innovation, and promoting collaboration within the global medical community. The primary purpose of AIMRD is to enhance the research capabilities of AIMS by providing state-of-the-art facilities and resources, including advanced laboratories equipped with the latest technology and access to extensive scientific databases. The department will foster interdisciplinary collaboration among various medical and scientific disciplines, bringing together experts in molecular biology, pharmacology, clinical medicine, and public health to address complex medical challenges holistically. One of the core objectives of AIMRD is to prioritize translational research, ensuring that laboratory findings are efficiently transformed into clinical applications, developing new diagnostic tools, therapeutic strategies, and preventive measures for a variety of diseases. AIMRD is also committed to capacity building by training the next generation of researchers and clinicians, offering medical students, postgraduate researchers, and healthcare professionals' opportunities to engage in high-quality research, attend workshops and seminars, and collaborate on international research projects. Establishing robust collaborative networks with national and international research institutions is another key objective, facilitating the exchange of knowledge, resources, and expertise to enhance the quality and impact of research initiatives. By fostering a culture of innovation, collaboration, and excellence, AIMRD is poised to make substantial contributions to medical research and healthcare, ultimately benefiting the global community.

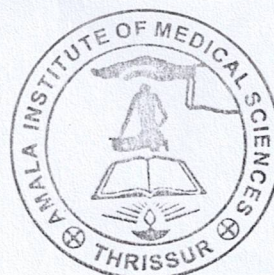
Motto

"From Knowledge to Cure"

Vision:

To be a global leader in medical research and innovation, transforming scientific discoveries into impactful health solutions that improve lives and advance healthcare for all.

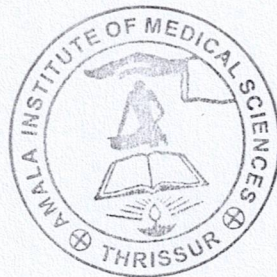
Mission:



To drive excellence in medical research through an integrated, multidisciplinary approach, fostering collaboration, innovation, and translation of scientific discoveries into clinical applications. We are dedicated to enhancing healthcare outcomes, training the next generation of researchers and clinicians, and establishing robust partnerships with national and international institutions to address complex medical challenges.

Objectives:

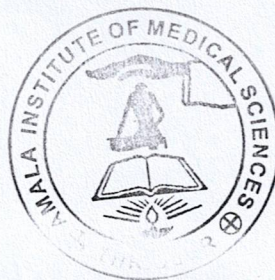
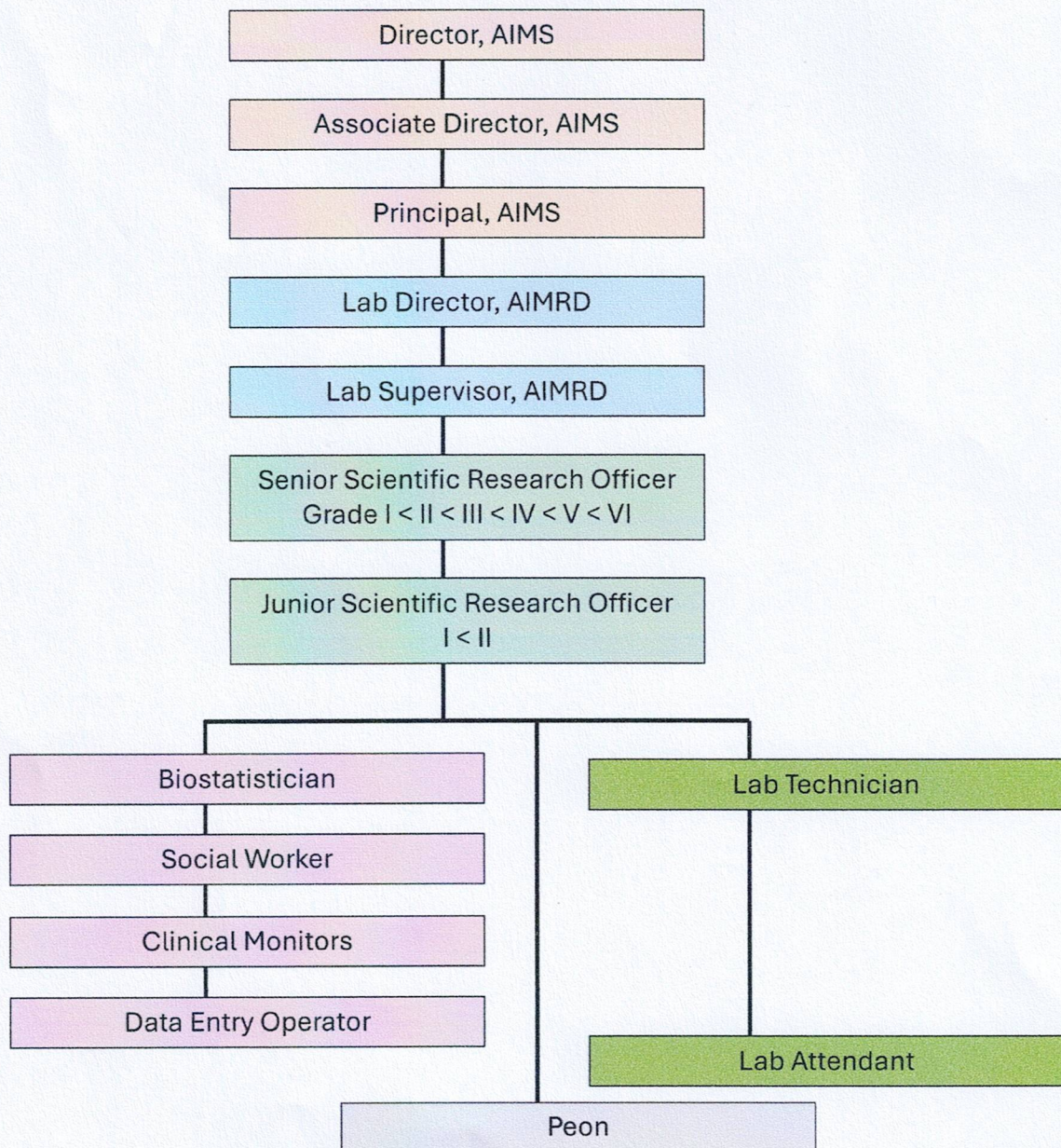
1. **Enhance Research Capabilities:** To provide state-of-the-art facilities and resources, including advanced laboratories and access to extensive scientific databases, to support cutting-edge research and innovation.
2. **Foster Interdisciplinary Collaboration:** To bring together experts from various medical and scientific disciplines, including molecular biology, pharmacology, clinical medicine, and public health, to address complex medical challenges through a holistic approach.
3. **Prioritize Translational Research:** To ensure efficient transformation of laboratory findings into clinical applications, developing new diagnostic tools, therapeutic strategies, and preventive measures for a variety of diseases.
4. **Capacity Building and Training:** To offer medical students, postgraduate researchers, and healthcare professionals opportunities to engage in high-quality research, attend workshops and seminars, and collaborate on international research projects to train the next generation of researchers and clinicians.



5. **Establish Collaborative Networks:** To build robust partnerships with national and international research institutions, facilitating the exchange of knowledge, resources, and expertise to enhance the quality and impact of research initiatives

Organogram

Amala Integrated Medical Research Department



Betsy
Dr. BETSY THOMAS
 MD, FRCOG, DNB, MCOG
 PRINCIPAL
 AMALA INSTITUTE OF MEDICAL SCIENCES
 AMALA NAGAR, THRISSUR-680 555